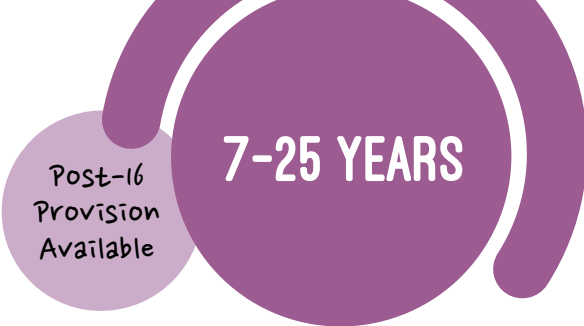


TCES NATIONAL ONLINE SCHOOL

Available across the UK and internationally



A Department for Education accredited online special school offering expert therapeutic education for students with complex needs.

- Bespoke timetable for every student, directed towards a desired outcome.
- Rolling six-week 'Assess/Plan/Do/Review' cycle, providing Assessment Reports and updates to parents and commissioning bodies.
- Weekly inclusion meetings review and assess daily intervention guidelines for each student.
- Experienced SEND teachers deliver live online lessons, with recordings available for all students afterwards.
- Pastoral mentors for every student.



Key Information

- Available for students with and without an EHCP.
- Chromebook provided for every student, installed with safeguarding software.
- Universal & Targeted group therapy delivered by National Online School clinical team.
- 5 days per week, including self-study on Friday afternoon.
- A Levels, GCSEs, Functional Skills and AQA Unit Awards available with remote invigilation if required.
- With funding in place, we can start a student within 72 hours from referral to induction.

Common Student Profiles

- Any child or young person out of education.
- Young people with complex needs including SEMH, ASC, EBSA and anxiety.
- Young people at risk of current placements breaking down.
- Young people in between placements including LAC and students in transition periods.

This is not an exhaustive list. Contact NOSreferrals@tces.org.uk to discuss case by case.



The **FIRST** online special school to be accredited by the DfE Online Education Accreditation System (OEAS) in January 2024



DFE ACCREDITATION

The First DfE accredited online special school in the country



Department
for Education

“

We feel like we've got our son back, our other children feel like they've got their brother back. Most importantly, Makers has got his life back.

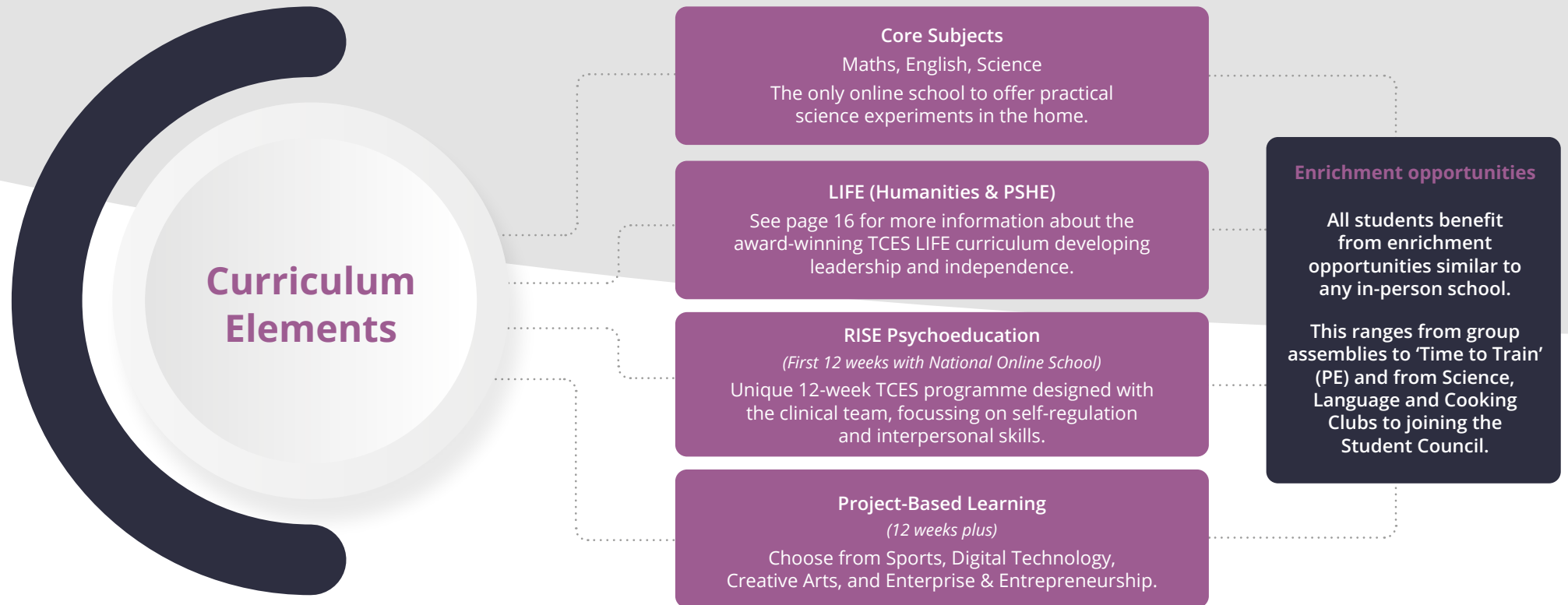
**TCES National Online
School Parent**

”



TCES NATIONAL ONLINE SCHOOL

Our curriculum overview



Student Destinations & Outcomes

TCES National Online School offers short, medium or long-term therapeutic education solutions for students anywhere in the UK, and even overseas.

Of all leavers in 2023-24, 80% successfully moved to an appropriate school setting, identified by the funding party, with the transition assisted by the National Online School senior team.

In 2024, our students achieved results at GCSE and A Level, some of whom had been out of education for over a year before joining the National Online School, never thinking such success was ever an option for them.

TCES NATIONAL ONLINE SCHOOL

National Online School sample timetable

We aim to place students in small-group classes with a full-timetable as quickly as possible, but we appreciate every student has unique needs and may require a more integrated approach at the beginning of their time with our online school.

First 12 weeks:
Improve attendance and prevent exclusion short-term support

	9:00-9:25	9:30-10:15	10:15-10:30	10:30-11:15	11:15-11:30	11:30-12:15	12:15-12:30	12:30-13:15	1.15 to 2.00	2.00 to 2.45	2.45 to 3.30
MONDAY	Assembly	English	BREAK	Maths	In the Zone	RISE Psychoeducation	Drop Everything and Read (DEAR)	LUNCH	In the Zone	RISE Psychoeducation	Language Club
TUESDAY	PE Time to Train	RISE Psychoeducation		Maths	In the Zone	Science			In the Zone	Humanities	Edible Science
WEDNESDAY	Assembly	English		Maths	In the Zone	RISE Psychoeducation			In the Zone	RISE Psychoeducation	Sports Skills / Student Council (every 2 weeks)
THURSDAY	PE Time to Train	English		RISE Psychoeducation	In the Zone	Science			In the Zone	Humanities	Cooking Club
FRIDAY	Assembly	English		Maths	In the Zone	RISE Psychoeducation			Independent Working (Lexia, Typing, Reading, project work)		

12 Weeks Plus:
Long-term support

	9:00-9:25	9:30-10:15	10:15-10:30	10:30-11:15	11:15-11:30	11:30-12:15	12:15-12:30	12:30-13:15	1.15 to 2.00	2.00 to 2.45	2.45 to 3.30
MONDAY	Assembly	English	BREAK	Maths	In the Zone	Project-Based Learning	Drop Everything and Read (DEAR)	LUNCH	In the Zone	Project-Based Learning	Language Club
TUESDAY	PE Time to Train	Project-Based Learning		Maths	In the Zone	Science			In the Zone	Humanities	Edible Science
WEDNESDAY	Assembly	English		Maths	In the Zone	Project-Based Learning			In the Zone	Project-Based Learning	Sports Skills / Student Council (every 2 weeks)
THURSDAY	PE Time to Train	English		Project-Based Learning	In the Zone	Science			In the Zone	Humanities	Cooking Club
FRIDAY	Assembly	English		Maths	In the Zone	Project-Based Learning			Independent Working (Lexia, Typing, Reading, project work)		

We never give up. We never exclude.



MEET OLIVIA

○ Before Joining TCES National Online School

- Olivia's prior school attendance 30%.
- She has had 5 exclusions from education.
- Olivia has a diagnosis of Dyslexia, Bipolar, and ASD and was often dysregulated during lessons. Previously this has resulted in regular physical altercations with staff and peers.

○ January 2024 - Started at the National Online School

○ Progression

- Olivia's attendance increased to 94%.
- She received a bespoke timetable that focused on her chosen GCSE subjects.
- The National Online embedded therapeutic practices in her lessons that supported her with her anxiety.
- Olivia sat her GCSE Exams with the support of NOS, providing Olivia with a personal invigilator at her home.

○ June 2024

- Olivia has applied for Kirklees College to study a T-Level 3 course in Mental Health.

"We honestly feel that without TCES' support, Olivia wouldn't have been sitting her exams and wouldn't have gained the knowledge and confidence to approach the exams in the way she has. We will forever be grateful for the care, support and encouragement Olivia has had from the National Online School." **Olivia's Parent**

"The National Online School saved my education. I would not be where I am today with a college offer and comfortably taking my exams at home if it wasn't for them." - **Olivia, Student**

MEET MARTIN

○ Before joining at National Online School

- Diagnoses of ADHD and SEMH.
- Indicator of post-traumatic stress (PTSD).
- Previous school attendance 0%.
- Hyperkinetic disorder.
- • Social anxiety at school.

○ September 2021 - Started at the National Online School

- Martin received a bespoke timetable that focused on his chosen GCSEs subject and interests.
- The National Online School embedded a therapeutic approach to Martin's learning, particularly the Zones of Regulation, which equipped Martin with the language and framework to better understand and discuss his emotional wellbeing.

○ Progression

- Martin took his GCSE Examinations with The National Online School.
- His attendance at The National Online School was 75.4%.
- Martin became an active member of the TCES National Online School Student Council.
- • Martin achieved a grade 4 in his Maths GCSE, Science and Further Maths.

*Don't just take
our word for it*

'Led by the proprietor, leaders and staff are driven by a strong moral purpose to improve children's academic and pastoral outcomes. They expertly intertwine education and therapy, working tirelessly to identify, reduce and often eliminate the barriers to learning that children have faced.'

Department for Education TCES National Online School inspection report

